

6' Traditional Fence Panel Installation Guide

v20230106US



CONTENTS

Important Note	3
Setting the Posts	4
Install the Stringers	5
Install Fence Pickets	6

IMPORTANT NOTE:

Read All Sections Before You Start

For the most up to date information, please visit our website @ www.newtechwood.com

About this Installation Guide

This installation guide describes building a 6 ft traditional fence with our composite picket board US89. Before starting your fencing project, you should select and purchase your desired fence posts from your local home centers or hardware stores. The fence post is not included with the composite picket board US89.

Risks and Liability

- Check and verify underground utilities' locations
- Check with local and regional building codes
- Check and verify your property lines and boundaries.

Safety

Wear appropriate safety equipment to avoid any risk of injuries but is not limited to the following safety equipment: gloves, safety glasses, long sleeves, and pants.

Tools

Always use the proper tools for installation, such as woodworking tools:

Acclimation

- Acclimating at least 24 hours prior to installation is recommended.
- Acclimating the boards will eliminate any unwanted shrinkage issues seen during and after installation.

Please Note:

Always remember when allowing the picket boards to acclimate at the job site, it is essential to put them on a flat and even surface. If placed on an uneven surface, the picket boards could warp to the shape of the terrain.

Storage

- Picket boards should be stored and transported horizontally
- Picket boards should always need to be stored on flat solid surfaces.

Installation Procedure

1 Setting the Posts

- 1.1 Dig the holes. It is about a third as deep as the post height.
- 1.2 The hole diameter is three times the width of the post.
- 1.3 Layer 6" of gravel at the bottom of the hole for proper drainage.
- 1.4 Position the posts in the center of the holes.
- 1.5 Ensure the posts are plumb using a two-side post level.
- 1.6 Pour the concrete into the hole. Work it to about 2" below the surface to allow for fill soil or dirt back into the holes.
- 1.7 Check and verify the posts are still plumb again.
- 1.8 After the concrete has cured, fill the soil or dirt back into the holes.

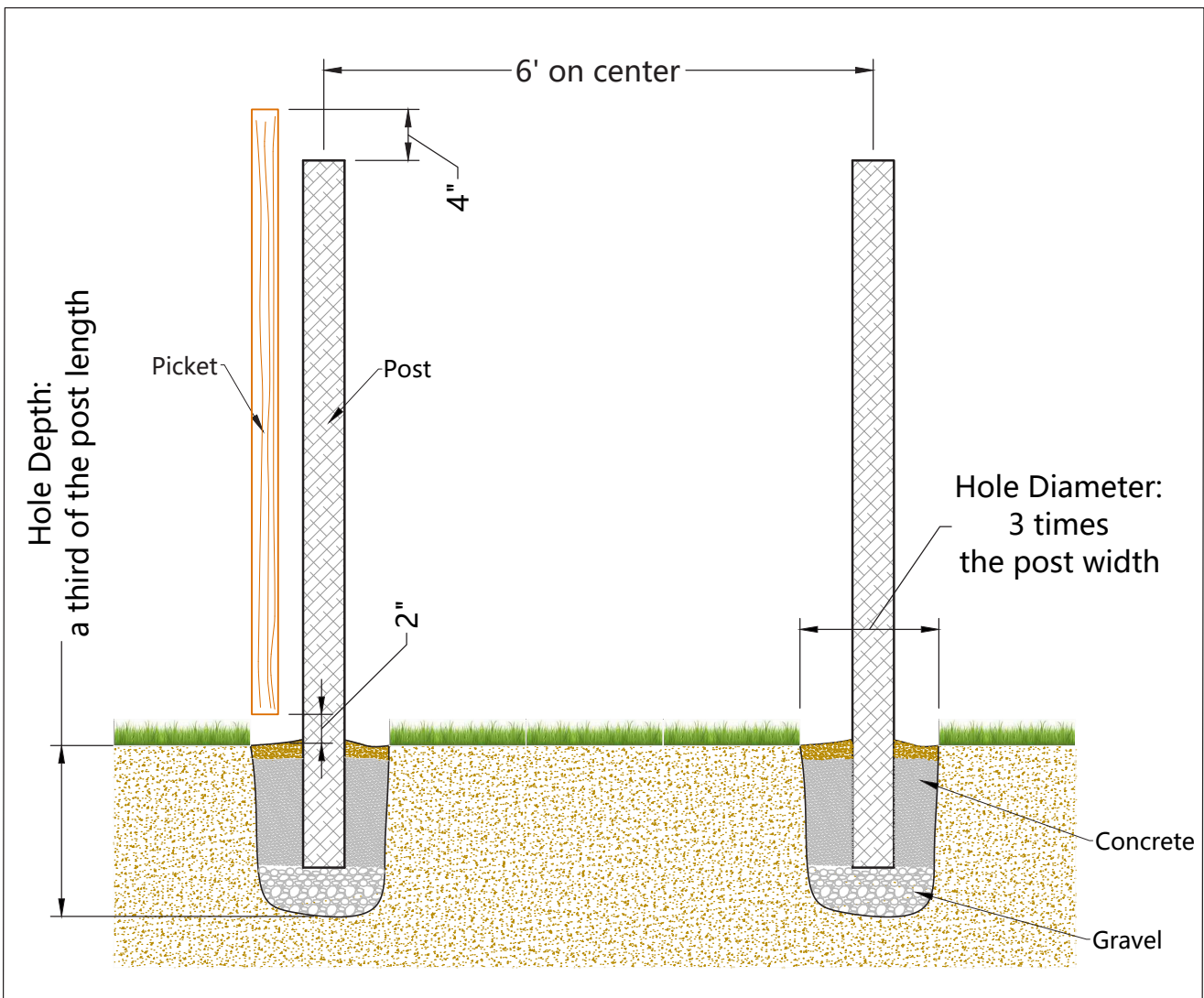


Diagram 1

2 Install the Stringers

- 2.1 It's recommended to fasten three or four stringers to the post for a 6' Traditional fence.
- 2.2 Fasten the bottom stringer to the posts at least 6" from the ground
- 2.3 Fasten the upper stringer to the post at least 6" from the top.
- 2.4 The space between stringers should be equal and is in the max of 2 feet.

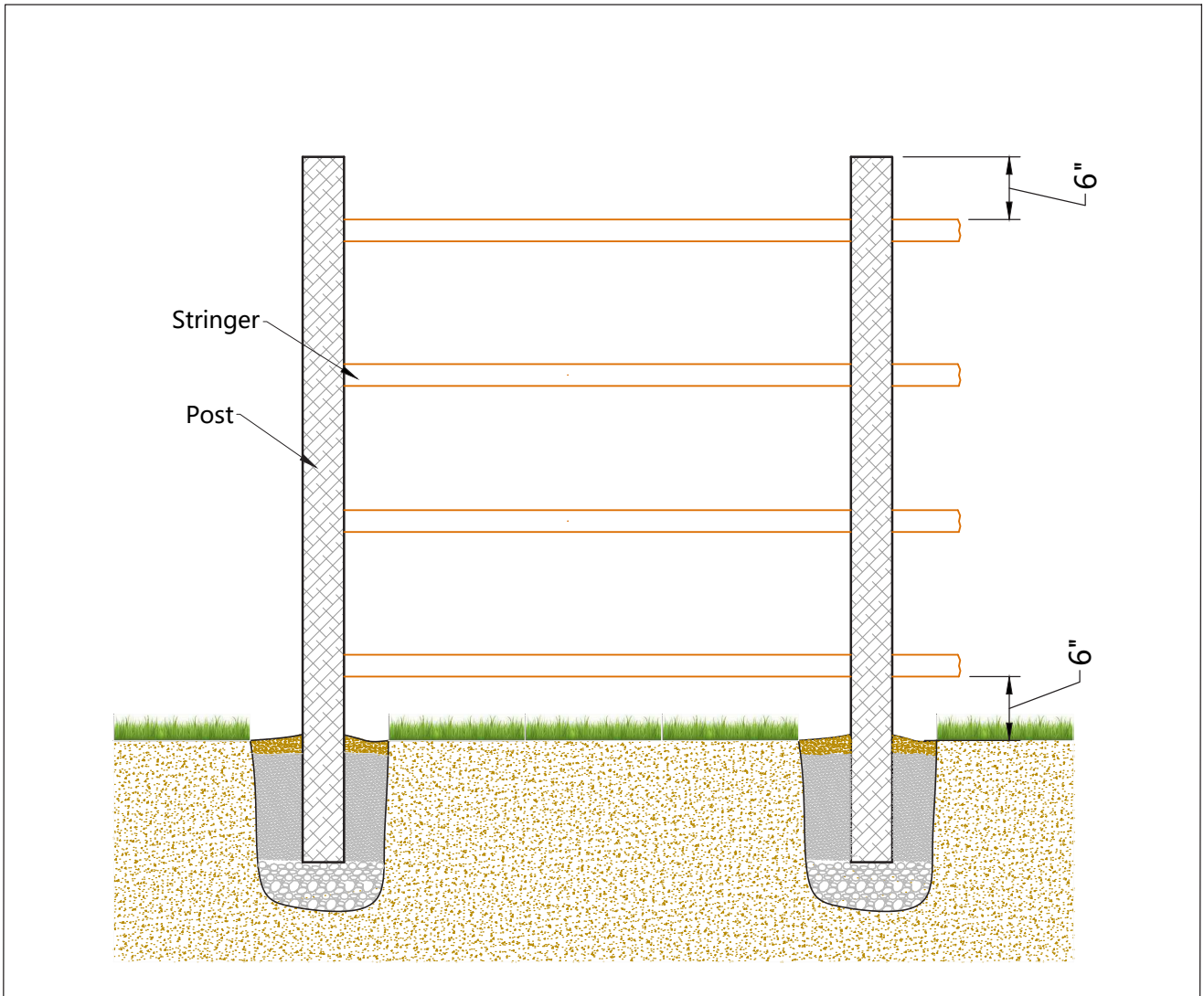


Diagram 2

3 Install Fence Pickets

- 3.1 To keep the tops of the pickets even, tie the mason line between the posts at the desired height. Attaching the furring strips to the post if needed.
- 3.2 Besides the screw holes for the upper stringer, you must pre-drill the screw holes with a slightly larger drill bit to allow the picket board to expand and contract due to temperature changes.
- 3.3 Fasten the pickets with two composite screws per stringer. Offset the screws, as shown in the **Detail 3-1**.
- 3.4 Use a level to plumb the first picket.
- 3.5 Use a spacer block to set the consecutive pickets. Use the spacer block at the middle and bottom of each picket.
- 3.6 If there is a spacing between the pickets, use a spacer to help keep the spacing even.
- 3.7 Frequently use a level to check the pickets to keep them plumb.

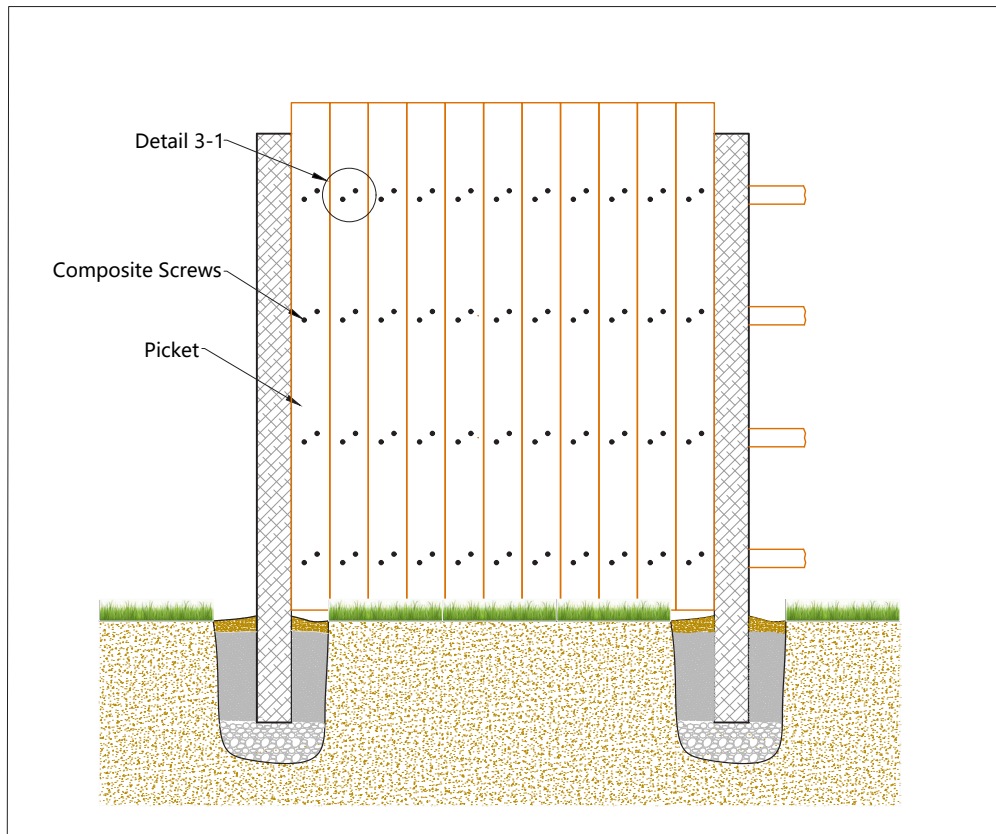
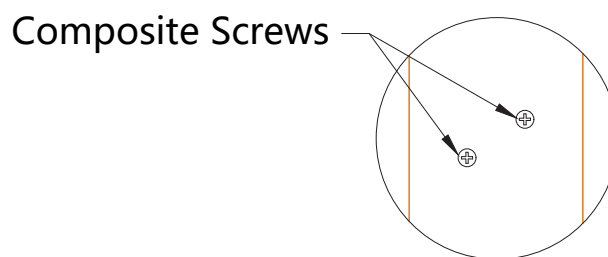


Diagram 3



Detail 3-1



6' Traditional Fence Panel Installation Guide

v20230106US

©2023 Newtechwood Corporation.

NewTechWood® is a registered trademark of Newtechwood Corporation.

To obtain a copy of the most current version of this installation guide,
visit us online at www.newtechwood.com.



NewTechWood